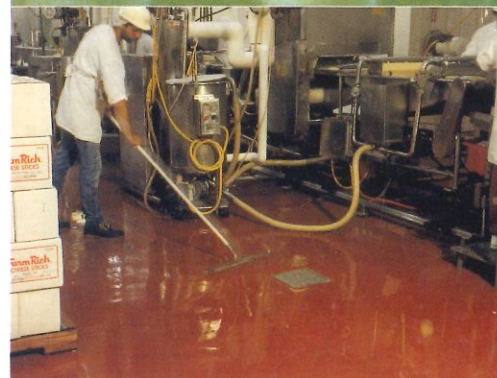


UCRETE®

THE TOUGHEST FLOOR

- + Thermal Resistance -40°C up to +120°C
- + Chemical Resistance (up to 150 kinds)
- + Anti - static
- + Wear & Crack Resistance
- + Fast Installation
- + Any system of cleaning are applicable
- + eg. Steam (Tested by Campden)
- + Hygienic Approval from EU USDA
Campden & CEBT
- + ISO 9002 Approval
- + up to 40 countries references
- + up to 50 projects of references in Thailand

+ HACCP Certified for Food-Safe Flooring Surface



The Users

- + Food Industry
- + Chemical Industry
- + Pharmaceuticals
- + Metal Processing
- + Textiles
- + Water Industry
- + Electronics
- + Pulp and paper

UCRETE®

POLYURETHANE CONCRETE FLOORING

UCRETE THE TOUGHEST FLOOR

UCRETE polyurethane concrete floors are the toughest floors... for the most demanding industrial environments. Developed and patented in the late 1960's UCRETE flooring systems combine the toughness and chemical resistance of polyurethane with the durability and heat resistance of concrete. Wherever floor surfaces are exposed to corrosive attack and heavy traffic UCRETE flooring provides the most cost-effective solution.

benefits

UCRETE flooring...the benefits.

Long Life

+ **Wear resistance** to heavy traffic... even steelwheeled trolleys. Abrasion resistance double that of concrete.

+ **Heat resistance** to temperatures from -40°C to 120°C UCRETE floor will not de-laminate due to stresses caused by thermal shock or repeated cycling.

+ **Impact resistant.** UCRETE floors will yield plastically-not crack or craze. This resistance is maintained even at freezer-room temperatures.

Hygiene and Safety

+ **Approvals.** UCRETE floors meet all the requirements of EC directives on food plant hygiene and those of US regulatory agencies.

+ **Slip resistant.** Profiled grades are slip-resistant even when wet.

+ **Easy to clean.** UCRETE floors can be cleaned with almost all industrial detergents and sterilants, high pressure water jets or live steam (at 9mm thickness or above)



+ **Chemical resistance (up to ISO kind).** UCRETE floors have a wider range of resistance to chemicals and solvents than any other resin floor. The resistance is maintained through the total thickness, it is not dependent on a thin seal coat.

+ **Non-tainting.** No tainting of foodstuffs by the finished floor 12 hours after application.

+ **Monolithic.** Joints are minimised. Less accumulation of dirt and bacteria.

+ **Non-dusting.**

Expert Installation

+ **UCRETE** floors are laid only by licenced applicators fully trained in the correct handing, mixing and application techniques.

Fast Application

+ **Moisture tolerant.** Can be laid onto 7 day old concrete. On some polymer screeds application after 2 days is possible.

+ **Cures rapidly.** Can be walk on after 8 hours and in full service after 24 hours at 15-20°C



Products

UCRETE UD200

Finish : Profiled

Applied thickness : 6 to 9 mm

Thermal resistance : -40°C up to 120°C

Chemical Resistance : up to 150 kinds.

UCRETE UD200 floors find their widest use in the food industry. They have a light profiled finish giving an optimum combination of wet/dry slip resistance and ease of cleaning. The choice of thickness is determined by service/cleaning temperatures and severity of traffic.

Products

UCRETE MF

Finish : Smooth

Applied thickness : 3 to 6 mm

Thermal resistance : -5°C up to 70°C

Chemical Resistance : up to 150 kinds

UCRETE MF floors have a smooth semi-matt finish giving maximum ease of cleaning. They are widely specified for dry process, packing and storage areas subject to light traffic (including fork-lifts) and occasional spillage.

Products

UCRETE RG

Finish : Smooth

Applied thickness : 3 to 9 mm

Thermal resistance : -40°C up to 120°C

Chemical Resistance : up to 150 kinds

UCRETE RG is used to form covers and skirtings and to protect plinths, drains, tank bases, sumps, effluent storage pits and other vertical surfaces.

The Mastertop® 1200 systems

Mastertop® 1210

Floor coating, 0.5 to 1 mm. the economical solution for areas with moderate mechanical wear and limited chemical exposure

Mastertop® 1220

Multilayer floor, 2 to 5 mm. Offers high resistance to mechanical wear and chemical exposure; suitable for steam-jet cleaning

Mastertop® 1225

Antistatic multilayer floor, 2 to 5 mm. The conductive version of Mastertop 1220 for areas expose to electric fields and danger of explosion

Mastertop® 1230

Self-levelling floors, 2 to 4 mm. For areas with chemical and biological exposure and high aesthetic and hygienic requirements.

Mastertop® 1240

Mortar screed, 6 to 8 mm. For areas with extreme mechanical, chemical and physical exposure and high hygienic requirements

Mastertop® 1250

Mosaic topping, 6 to 8 mm. For decorative floors with good mechanical strength and good maintenance properties

Mastertop® 1255

Rock floor, 5 to 8 mm. For special decorative and ornamental effects

Specialty flooring products from Bitec



Specialty flooring products from Bitec

+ Polyurethane Concrete flooring

- Ucrete UD200 (Heavy-duty slip resistant flooring)
- Ucrete MF (Medium-duty slip resistant flooring)
- Ucrete RG (Coving and wall render)

UCRETE flooring approvals and test reports

Austria - Building Institute

- Resistance to cleaning chemicals 1992

Denmark - Technological Institute

- Abrasion and chemical resistance 1987

France - CEBT

- Physical properties 1990

Germany - Polymer Institute

- Physical properties 1991

UK - Canpden Food and Drink Research Association

- Taint testing 1982
- Hygiene characteristics 1989
- Water absorption 1993

USA - USDA Food Safety and Inspection Service

- Acceptance for meat and poultry plants 1983
- Renewal 1991

+ Epoxy flooring

- Mastertop 1110 (Water dispersed epoxy resin coating)
- Mastertop 1210 (Industrial floor coating)
- Mastertop 1220 (Slip-resistant seamless industrial flooring system)
- Mastertop 1230 (Seamless self-smoothing industrial flooring system)
- Mastertop 135i (Conductive Self-smoothing industrial flooring system)
- Mastertop 1240 (Coloured industrial flooring mortar system)
- Conipox 285 W-AS (anti-static)
- Conipox 289 (Conductive layer)

+ Cementitious floorhardener flooring

- Mastertop 100 (Non-metallic)
- Mastertop 200 (Metallic)

+ Fiberglass Reinforcement Plastics (FRP)

- FRP. Lining & Coating
- FRP. General Work by Design

BITEC ENTERPRISE LTD.

11th Floor, KPN Tower Building
 719 Rama 9 Road, Bangkapi, Huaykwang, Bangkok 10310 Thailand
 Tel. (662) 717-1155 Fax. (662) 717-1156
www.bitecenterprise.com

